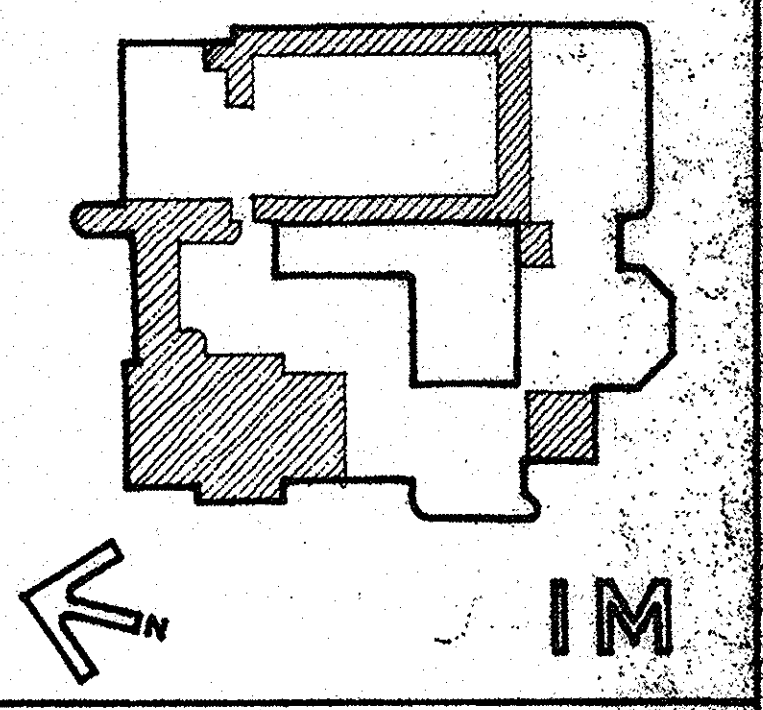
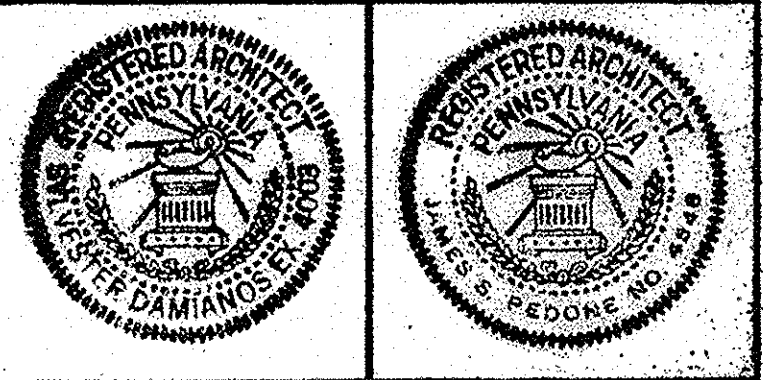


- GENERAL NOTES:
1. FOR DOOR SYMBOL INTERPRETATION SEE DWG. A-25
  2. FOR DOORS & FRAMES SEE DWG. A-25
  3. FOR ROOM FINISH SCHEDULE SEE DWG. A-20
  4. FOR BASE DETAILS SEE DWG. A-15
  5. SEE SPECIFICATIONS FOR LIST OF ABBREVIATIONS
  6. FOR LINTEL SCHEDULE SEE DWG. A-25
  7. FOR MATERIAL & SYMBOL INDICATION SEE DWG. A-1.
  8. --- EXISTING WALLS & PARTITIONS TO BE REMOVED.
  9. --- EXISTING WALLS & PARTITIONS TO REMAIN.



Date	3/17/72	Approved	<i>[Signature]</i>
	3-17-72		<i>[Signature]</i>
	3/17/72		<i>[Signature]</i>
	3/17/72		<i>[Signature]</i>
	3/17/72		<i>[Signature]</i>
	3/17/72		<i>[Signature]</i>

Renovation of Carnegie Library of Pittsburgh Allegheny Regional Branch

**Damianos and Pedone**  
 Architecture  
 Interior Architecture  
 416 Hastings Street  
 Pittsburgh, Pennsylvania 15206  
 (412) 362-8422

# LEVEL IM

Revised Date 3-17-72 **7110** **A5**

