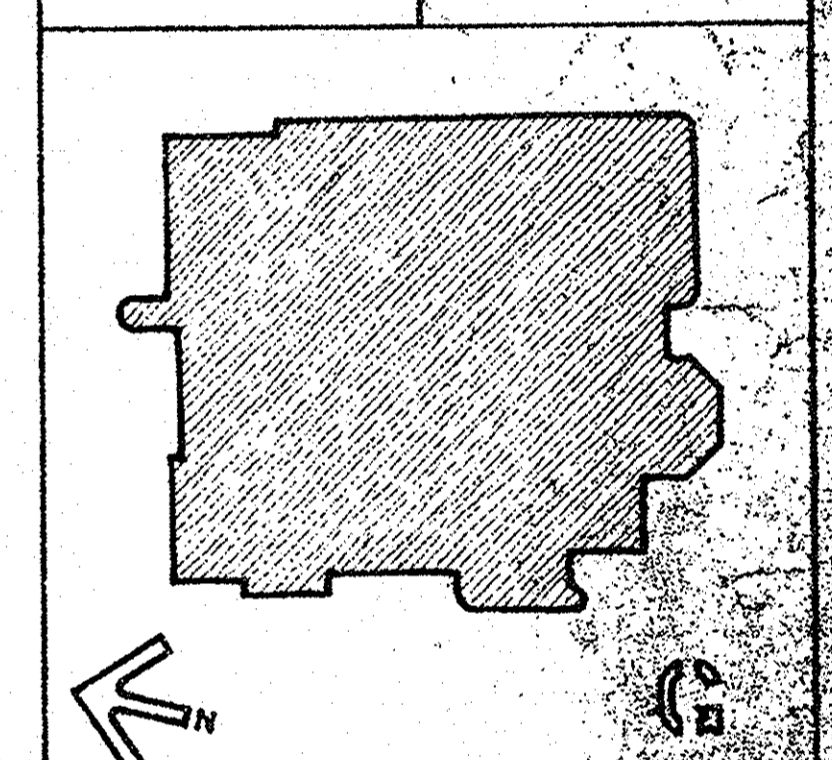
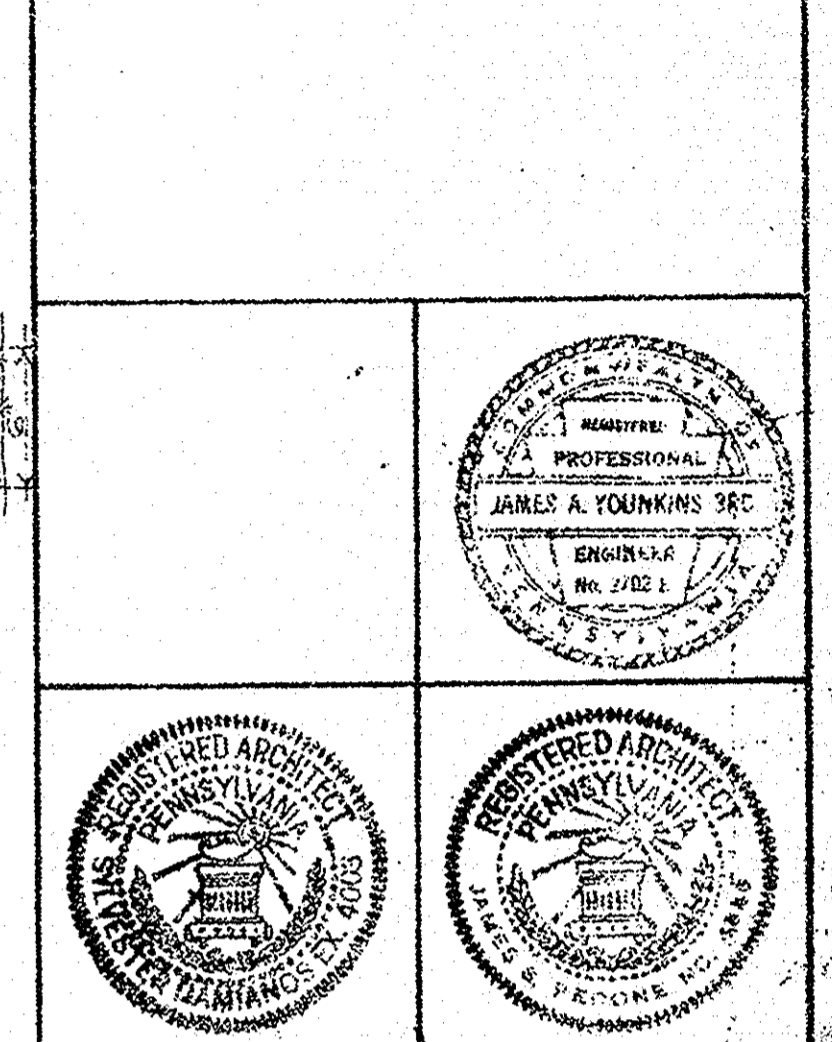


- GENERAL NOTES:**
1. FOR DOOR SYMBOL INTERPRETATION SEE DWG. A-25
  2. FOR ROOM FINISH SCHEDULE SEE DWG. A-25
  3. FOR PART DETAILS SEE DWG. A-15
  4. FOR LINTEL SCHEDULE SEE DWG. A-25
  5. REMOVE EXIST. ARCHED SPANNING WITH BACK TO MATCH FOR ARCHES THAT HAVE BEEN PREVIOUSLY REMOVED FOR CONSTRUCTION.
  6. SEE SPECIFICATIONS FOR LIST OF ABBREVIATIONS.
  7. FOR MATERIAL SYMBOL INDICATION SEE DWG. A-1.
  8. EXISTING WALLS & PARTITIONS TO BE REMOVED.
  9. EXISTING WALLS & PARTITIONS TO REMAIN.



Date	Approved
3/1/72	<i>[Signature]</i>
5-17-72	<i>[Signature]</i>
3/1/72	<i>[Signature]</i>
3/1/72	<i>[Signature]</i>
3/1/72	<i>[Signature]</i>

Renovation of  
Carnegie Library of Pittsburgh  
Allegheny Regional Branch

**Damianos and Pedone**  
Architecture  
Interior Architecture  
416 Hastings Street  
Pittsburgh, Pennsylvania  
(412) 382-8422

**GROUND LEVEL**  
Scale 1/4" = 1'-0"  
Revised 3/1/72